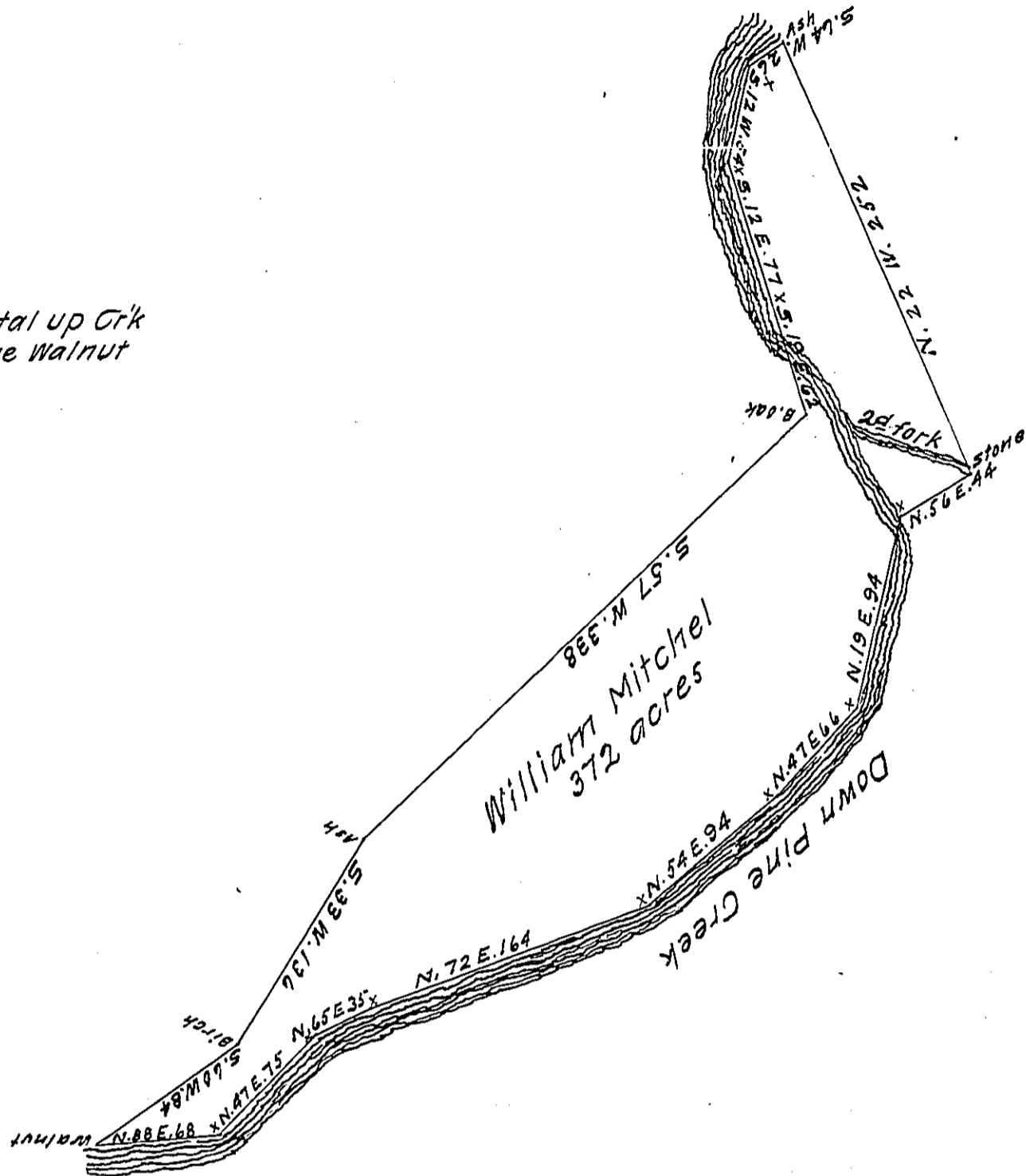


94
 66
 94
 164
 35
 75
 68
596 total up Crk
from ye Walnut



A draught of a tract of land situate on the second fork of Pine creek surveyed for William Mitchel by virtue of a warrent N^o 191 and dated the 17th of may 1785. ~~Surveyed the 15th of Sept^r 1786~~ containing three hundred and seventy two acres and allowance. Surveyed the 15th of Sept^r 1786.

Th^o Thomas Tucker D.S.

*To John Lukens Esq^r }
 Surveyor General }*

IN TESTIMONY that the above is a copy of the original remaining on file in the Department of Internal Affairs of Pennsylvania, made conformably to an Act of Assembly approved the 16th day of February, 1833, I have hereunto set my Hand and caused the Seal of said Department to be affixed at Harrisburg, this twenty fifth day of January 1912

Henry Hoover
 Secretary of Internal Affairs.